

recoril®
DESIGN LINE



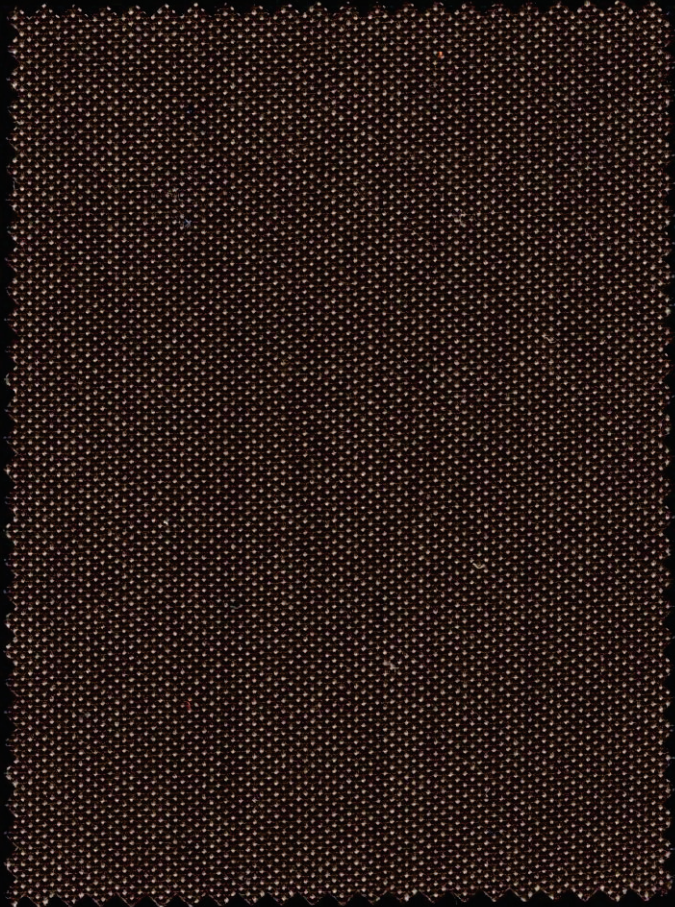
Solids Collection

RECASENS USA
BCN 1886

**SUPPLY
BRIGHT**

Awning Extrusions, Tools & Supplies
tlf: 844-448-3207
Sales@SupplyBright.Net

Superior performance fabric



- Tighter weave
- Superior stability
- Unsurpassed fade resistance
- Better to cut and sew
- Proprietary Infinity finishing process
- Long lasting water resistance
- Stain resistant
- Backed by 10 year warranty

Technical Specifications

FABRIC TYPE

Name of Fabric	Recacril®
Base Fabric	100% Solution Dyed Acrylic fibers

CHARACTERISTICS

Weight	9 oz. +/- 5%
Standard Put Up	65.64 yards / 60 meters
Finish	Fluorocarbon / Resin
Finished Width	47" / 120 cm
Styles	71 solids
Limited Warranty	10 years

SPECIFICATIONS

UV Resistance
Abrasion Rating
Hydrostatic
Puncture Strength

TEST RESULTS

1500 + hours
40,000 Rubs
40 cm
38 lbs

TEST METHOD

AATCC-16
ASTM-4157
AATCC-127 Method B
ASTM-751

WARP / WEFT

Tear Strength	11.5 lbs / 7.7 lbs
Tensile Strength	287 lbs / 149 lbs
Shrinkage	0.10% / 0%
Stretch	0% / 0%

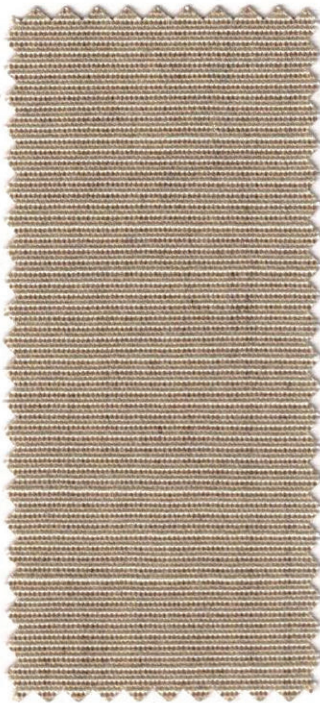


Awning Extrusions, Tools & Supplies
 tf:844-448-3207
 Sales@SupplyBright.Net

Slub Solids



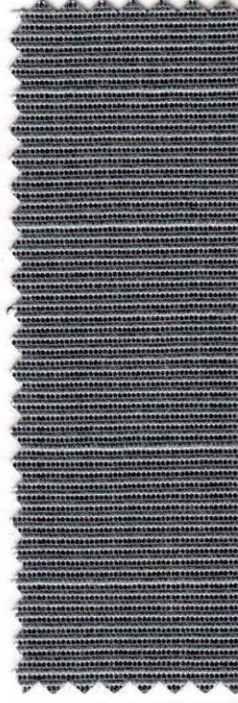
R-791 BEIGE SLUB TWEED
47"



R-794 SAND SLUB TWEED
47"



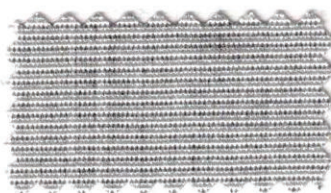
R-793 LINEN SLUB TWEED
47"



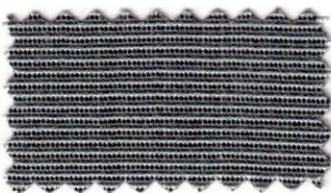
R-792 TAUPE SLUB T
47"

*REAcрил® slub fabrics are visually different from front to back. Either side is usable. Be careful in orientation.

Tweeds Solids



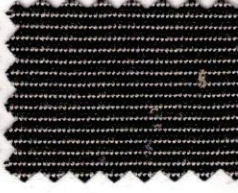
R-197 LEAD TWEED **NEW**
47"



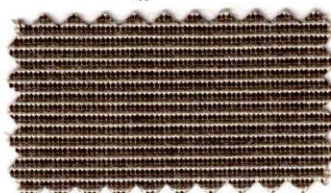
R-776 TAUPE TWEED **NEW**
47"



R-774 SMOKE TWEED **NEW**
47"



R-770 CHARCOAL T
47" / 60"



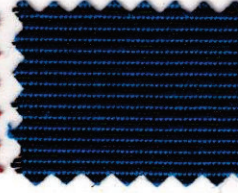
R-775 LINEN TWEED
47" / 60"



R-239 YELLOW TWEED **NEW**
47"



● R-773 RED TWEED
60" Only



R-772 BLUE TWE
60" Only



R-771 GREEN TWEED
60" Only



Awning Extrusions, Tools & Supplies
t: 844-448-3207
Sales@SupplyBright.Net

RECASENS USA
BCN 1886

● PREMIUM COLORS

RECASENS USA

BCN 1886

R-099 WHITE
47" / 60"

R-122 SEASHELL
47"

R-117 RAW
47" / 60"

R-217 IVORY **NEW**
47"

R-115 CREAM
47"

R-180 SAND
47"

R-126 LINEN
47" / 60"

R-220 ARGENT **NEW**
47"

R-133 CINNAMON
47"

R-222 OAK BUFF **NEW**
47"

R-100 BEIGE
47" / 60"

R-178 TOAST
47" / 60"

R-139 HEATHER BEIGE
47" / 60"

R-143 HEMP BEIGE
47" / 60"

R-149 CORN **NEW**
47"

● R-554 YELLOW
47" / 60"

● R-101 MANDARIN
47"

●● R-567 ORANGE
47" / 60"

R-185 PUMPKIN **NEW**
47" / 60"

● R-241 PHOENIX **NEW**
47"

● R-105 SALMON
47"

● R-176 RED
47" / 60"

● R-182 VERMILLION
47" / 60"

● R-177 BURGUNDY
47" / 60"

R-104 CHESTNUT
47" / 60"

R-195 CACAO
47"

R-243 TAPENADE **NEW**
47"

R-244 DUN **NEW**
47"

R-156 BROWN
47" / 60"



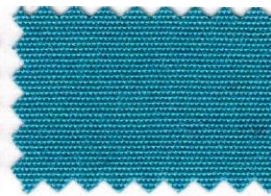
R-181 COFFEE **NEW**
47"



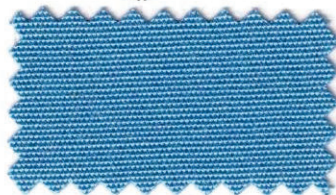
R-165 MAUVE
47"



R-110 LILLY
47"



R-171 TURQUOISE
47"



R-193 LIGHT BLUE
47"



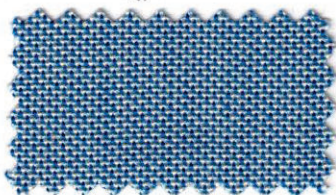
R-169 STEEL BLUE
47"



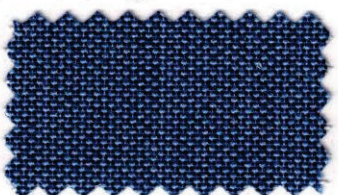
R-172 BLUE
47" / 60"



R-173 DARK BLUE
47"



R-229 SAPPHIRE **NEW**
47"



R-232 DENIM **NEW**
47"



R-170 ADMIRAL BLUE
47" / 60"



R-174 NAVY BLUE
47" / 60"



R-175 CAPTAIN NAVY
47" / 60"



R-160 PISTACHIO
47"



R-187 JADE **NEW**
47"



● R-162 KHAKI
47"



R-142 EMERALD
47" / 60"



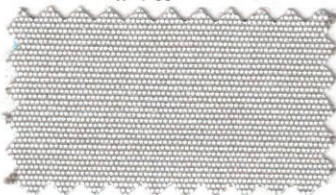
R-163 GREEN
47" / 60"



R-248 HUNTER **NEW**
47"



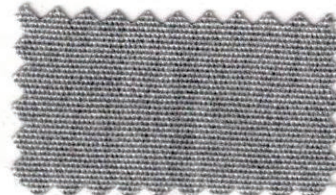
R-102 FOREST GREEN
47" / 60"



R-114 PEARL
47"



R-186 SILVER **NEW**
47"



R-196 TITANIUM **NEW**
47"



R-123 ARGENTA GREY
47" / 60"



R-138 CADET GREY
47" / 60"



R-161 GREY
47" / 60"



R-127 MOONROCK
47" / 60"



R-194 ASH **NEW**
47"



R-198 NICKEL **NEW**
47" / 60"



R-164 CHARCOAL GREY
47" / 60"



R-150 DARK GREY
47"



R-103 BLACK
47" / 60" / 78" / 98"



Warranty

Because S.A. Recasens' fabrics are manufactured with only the highest-quality raw materials and the most rigorous quality assurance procedures, we offer a 10 year warranty on Recacril.

The warranty protects against significant loss of strength and color in normal atmospheric conditions.

This warranty does not apply against deterioration of any kind due to abusive use, accidental burns, negligence, vandalism, perforations, natural disasters or acts of nature. Normal wear, weather soiling, or stains from environmental pollution or other sources are not covered.

The product must be properly installed and maintained. The warranty, if applicable, does not cover labor, frames, systems and installation supplied by the dealer.

Please refer to www.recasensusa.com/commitment for a complete copy of the warranty.

Care and Cleaning

Proper care and cleaning should be taken to ensure the life of Recacril® outdoor fabrics.

For regular care and maintenance, the excess dirt should be brushed from the fabric using a soft brush; the fabric should then be sprayed with warm water (not exceeding 100° F) and air-dried.

Periodically, the fabric should undergo a more thorough cleaning. Again, brush fabric with a soft bristled brush, spray with warm water, then apply a gentle soap. Let stand for 10 to 20 minutes taking care not to let it dry, then rinse thoroughly and air-dry. Do not use detergents and/or solvents.

When possible, please make sure to leave retractable awnings deployed or extended until the fabric cover is dried completely. This will help prevent mildew from forming.

Infinity Process

The Recacril® and Recsystem canvases are treated with a special technological process to ensure the lasting quality of the fabric. In this process, nanoparticles completely cover the surface of the fibers in the fabric, forming a permanent coat. After treatment, both the surface and the inside of the fabric are permanently protected against dirt build-up, and adverse effects of a wide variety of atmospheric agents.

The low reactivity and high stability of the Infinity treatment endows long-term protection to the awning, especially against mildew, and provides excellent water and oil repellence.

We're woven differently



Awning Extrusions, Tools & Supplies
tf: 844-448-3207
Sales@SupplyBright.Net

2018 version

RECASENS USA

BCN  1886

Phone: 888.726.9756
customerservices@recasensusa.com
www.recasensusa.com

