



Flex Face Frame Extrusion Kit

MATCHED[™]
STAPLE SYSTEM
COMPONENT

FLEX FACES

**Available
In Kit
Form
Only**

Need A Flex Face?

Need to Replace an Existing Flex Face?

Need to Replace a Pan Face for Flex Face?

Need a New face on an Existing Cabinet?



Digital Printed Flex Face Material



Flex Face Frame Backside With
MI-20 Offset & Corner Backset Braces



Supply Bright's unique system
for folding frame and face for
lower shipping cost

Supply Bright offers Flex Frame kits for any size face. Using our proprietary Flex Frame Profile you can retrofit a flex face to any existing cabinet with no modification necessary to the cabinet.

Our Flex Face Frame is designed to fit around the outside of the cabinet, Outside Dimensions (OD) is necessary to create the correct size frame. It is recommended that the ID of the Flex Frame be 1/4 inch bigger than the OD of the cabinet.

Our Flex Frame profile will accept any type of customers substrate, digital print, screen print, vinyl application, and can be either translucent or opaque

Supply Bright Flex Frames can be made to virtually any size.



Installed Digital Flex Face
Internal Illumination

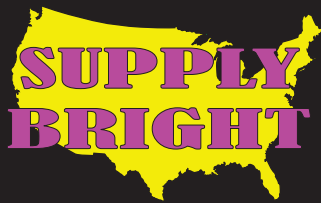


Installing a Flex Face
Retrofit to existing cabinet

Emily:

Thanks for being patient and you are very nice to work with. Appreciate how you treat us here at Central.

Alan - Kansas

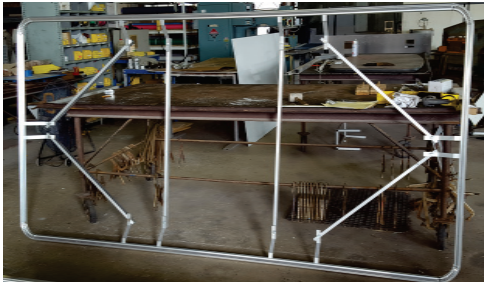


Flex Face Frame Extrusion Kit

FLEX FACES

Available for New & EXISTING
Sign Cabinets

MATCHED
STAPLE SYSTEM
COMPONENT



Sample Frame



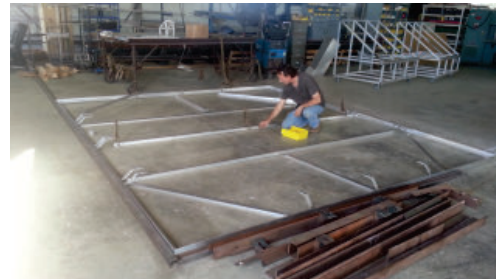
159" tall x 180" wide
Flex Face with Frame



Flex Face attached to Frame
Folded and crated for shipment



Back Side Showing Frame Structure



Frame for above Flex Face



Front Side with Stretched Fabric



10x 15ft



8ft x 12ft



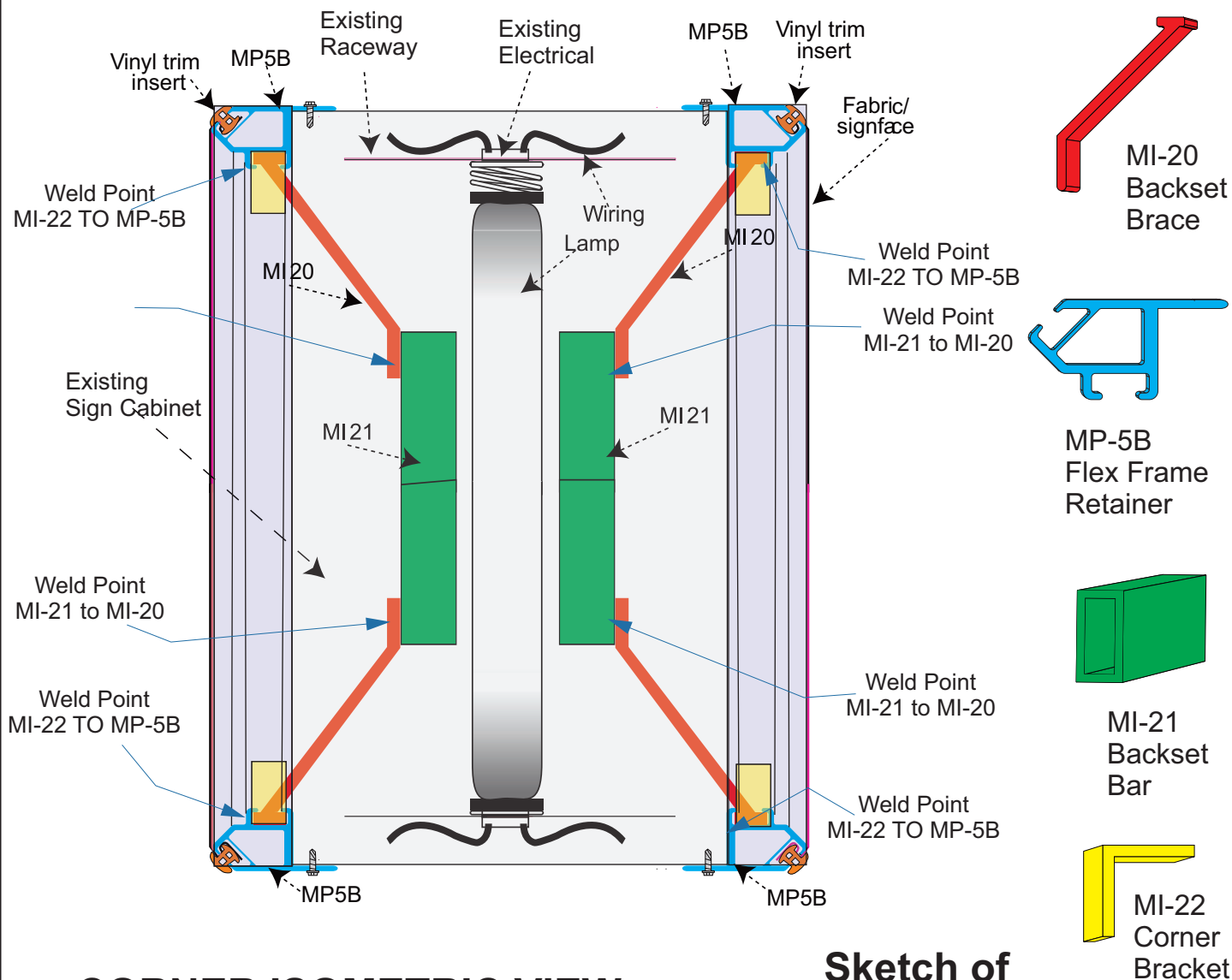
14ft x 12 ft

Voice - 844-448-3207 fax: 844-780-0910
Web Site: www.SupplyBright.net E-Mail: Sales@SupplyBright.net

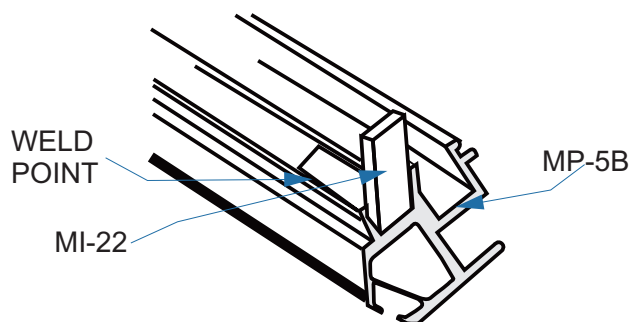


Flex Face Frame Extrusion Kit

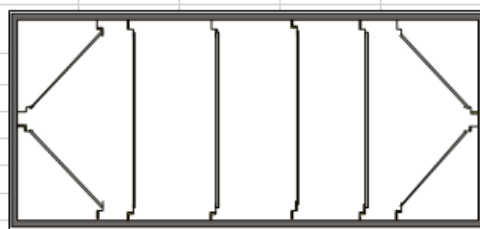
FLEX FACE KIT COMPONENTS CROSS SECTION



CORNER ISOMETRIC VIEW



Sketch of Brace Supports



Mounting and Attachment Hardware are NOT Included with Flex Face Kits.

Voice - 844-448-3207 fax: 844-780-0910
Web Site: www.SupplyBright.net E-Mail: Sales@SupplyBright.net